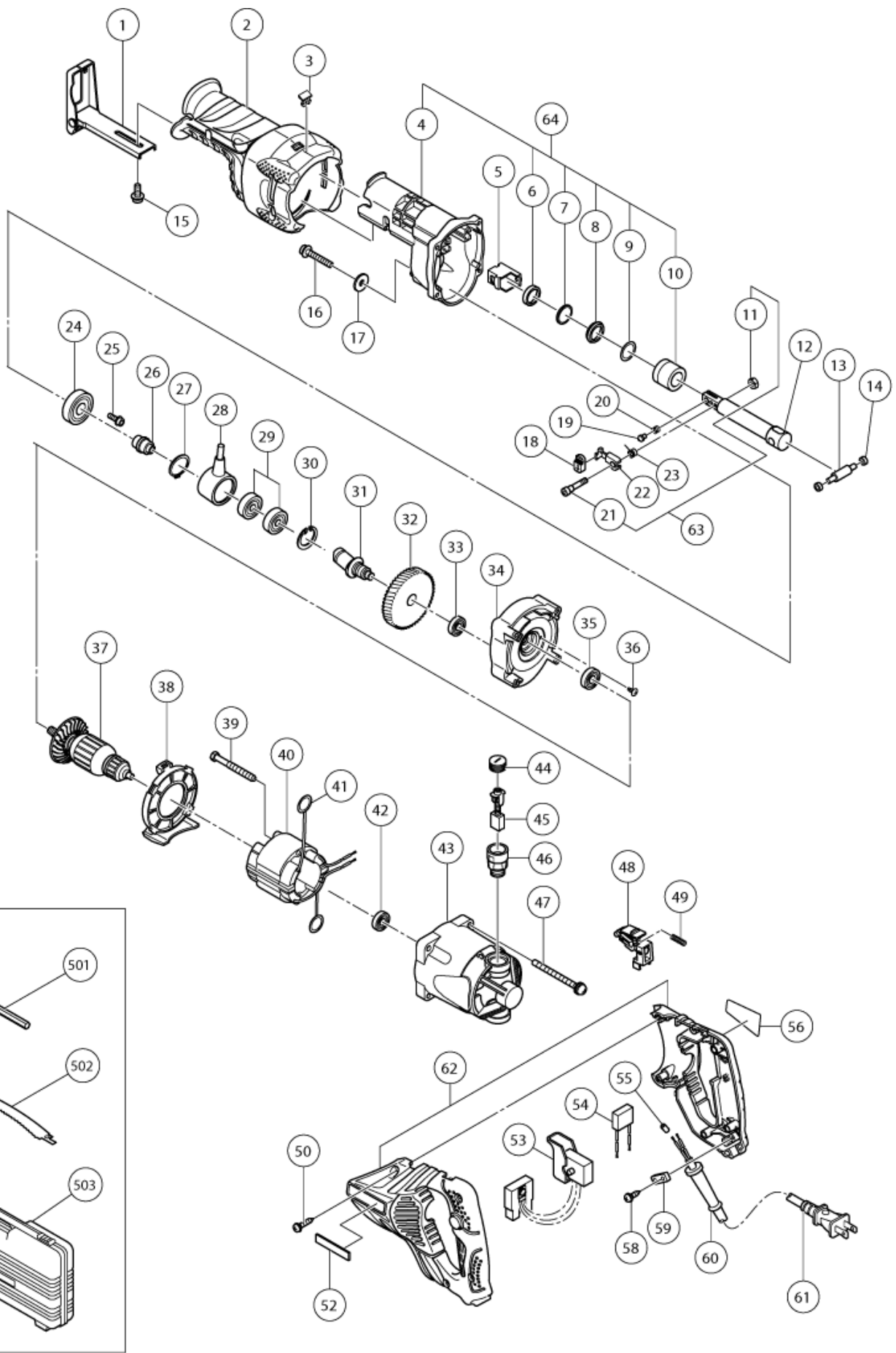


nÂ°	Artikel	Aantal gebruikt
1	334753 BASE (T)	1
2	330821 FRONT COVER (F)	1
3	330834 COVER PIN	1
4	330818 GEAR COVER (F)	1
5	326589 BLADE HOLDER (C)	1
6	318458 FELT WASHER	1
7	321117 WASHER (H)	1
8	318459 V-RING	1
9	321118 O-RING	1
10	321214 METAL (B)	1
11	949566 LOCK NUT M5 (10 PCS) (OLD 991-01050-013)	1
12	330828 PLUNGER (F)	1
13	330829 CONNECTOR PIN (F)	1
14	321136 SWING ROLLER (OLD 318492)	2
15	322142 NYLOCK BOLT M5X12 W/FLANGE	1
16	318451 NYLOCK BOLT M6X35 W/FLANGE	1
17	318452 WASHER (G)	1
18	321130 CAP	1
19	321134 HOLDER PIN (B)	1
20	318483 SPRING (B)	1
21	326590 SPECIAL BOLT M5	1
22	326588 LEVER (C)	1
23	326591 BLADE SPRING	1
24	6002DD BALL BEARING 6002DDUCMPS2S	1
25	317196 NYLOCK BOLT M4X12 W/FLANGE	3
26	322119 SUB SHAFT (B)	1
27	967261 RETAINING RING FOR D17 SHAFT	1
28	330830 RECIPRO PLATE (F)	1
29	327694 BALL BEARING 6003VVCM (NYLON RETAINER)	2
30	939556 RETAINING RING FOR D35 HOLE (10 PCS)	1
31	330831 SECOND SHAFT (F)	1
32	330832 GEAR	1
34	330819 INNER COVER (F)	1
35	6001VV BALL BEARING 6001VV	1
36	314430 SLOTTED HD.SCREW SEAL LOCK M4X10 (OLD 301936)	2
37	360872C ARMATURE 110 VOLT	1
37	360872E ARMATURE 220-230 VOLT	1
37	360872U ARMATURE ASS'Y 120V	1

nÂ°	Artikel	Aantal gebruikt
37	360872F ARMATURE 240V	1
38	330820 FAN GUIDE (F)	1
39	953174 HD.TAPPING SCREW D5X55 (OLD 956669)	2
40	340751G STATOR ASS'Y 220V	1
40	340751E STATOR ASS'Y 220-230 VOLT	1
40	340751F STATOR ASS'Y 240V	1
40	340751C STATOR ASS'Y 110 VOLT	1
40	340751D STATOR ASS'Y 120V	1
41	930703 BRUSH TERMINAL	2
42	608VVM BALL BEARING 608VVC2PS2L	1
43	330817 HOUSING	1
44	945161 BRUSH CAP	2
45	999056 CARBON BRUSH (1 PAIR)	2
45	999043 CARBON BRUSH (1 PAIR)	2
46	958900 BRUSH HOLDER	2
47	307224 MACHINE SCREW M5X60 (OLD 943430)	4
48	330835 OFF LOCK LEVER	1
49	330839 SPRING (F)	1
50	307028 TAPPING SCREW (W/FLANGE) D4X25 (BLACK)	5
52	HITACHI LABEL	1
53	330837 SWITCH 110-120 VOLT	1
53	330838 SWITCH 220-240 VOLT	1
54	930039 NOISE SUPPRESSOR	1
55	981373 TUBE (D)	2
56	NAME PLATE	1
58	984750 TAPPING SCREW (W/FLANGE) D4X16	2
59	937631 CORD CLIP	1
60	953327 CORD ARMOR D8.8	1
60	938051 CORD ARMOR D10.1	1
61	500435Z CORD 2,5M 2 X 1.0 H05VV-F W/PLUG 13A/250V GBR	1
61	500434Z CORD	1
61	323974 CORD	1
61	500447Z CORD 2,5M 2 X 1.0 H05VV-F (OLD 500395Z)	1
61	500247Z CORD (NEW 714500)	1
61	500234Z CORD 5M 2 X 1.0 FOR INA,SUR,MLT H05VV-F (NEW 714500)	1
61	500461Z CORD 3M 2 X 1,0 H05VV-F W/PLUG 16A CEE FORM 2P+E FOR GBR	1
61	500455Z CORD	1
61	500439Z CORD FOR AUS (OLD 500226Z/500411Z)	1

nÂ°	Artikel	Aantal gebruikt
62	334841 HANDLE (G+H) SET (OLD 330823 + 330826)	1
62	334842 HANDLE (G).(H) SET	1
63	334921 SPECIAL BOLT M5 SET	1
64	336374 GEAR COVER ASS'Y	1
502	327129 SABER SAW BLADES NO.341 150L P.14 (3 PCS	1
503	327054 CASE	1
602	958182 SABER SAW BLADES NO.2 (5 PCS.)	1
603	958183 SABER SAW BLADES N.3 (NEW 750057)	1
604	959611 SABER SAW BLADES NO.4 (5 PCS.)	1
605	958185 SABER SAW BLADES NO.5 (5 PCS.)	1
606	958188 SABER SAW BLADES NO.8 (5 PCS.)	1
607	996427 SABER SAW BLADES NO.9 (3 PCS.)	1
608	318611 SABER SAW BLADES NO.101 150L P.10 (5 PCS	1
609	318612 SABER SAW BLADES NO.102 228L P.10 (5 PCS	1
610	318613 SABER SAW BLADES NO.103 150L P.14 (5 PCS	1
611	318614 SABER SAW BLADES NO.104 228L P.14 (5 PCS	1
612	318617 SABER SAW BLADES NO.107 150L P.24 (5 PCS	1
613	318618 SABER SAW BLADES NO.108 228L P.24 (5 PCS	1
614	324818 SABER SAW BLADES NO.109 150L P.18 (5 PCS	1
615	324819 SABER SAW BLADES NO.110 228L P.18 (5 PCS	1
616	318619 SABER SAW BLADES NO.121 305L P.6 (5 PCS.	1
617	318620 SABER SAW BLADES NO.131 305L P.10/14(5PC	1
618	318621 SABER SAW BLADES NO.132 203L (5 PCS.)	1
619	330852 CUT-OFF GUIDE ASS'Y (L)	1
620	996423 @ NUT LEVER	1
621	996422 @ CHAIN BOLT	1
622	996421 @ GUIDE BAR	2
623	996424 @ SLIDE PLATE	1
625	321427 PLATE (B)	1
626	321428 BASE SLEEVE	2
627	949665 HEX.SOCKET HD.BOLT M5X14 (10 PCS)	2
628	949755 HEX SOCKET HD. BOLT M6X16 (10 PCS)	2
629	949425 WASHER M6 (10 PCS)	2
630	944458 HEX. BAR WRENCH 4MM	1
631	944459 HEX. BAR WRENCH 5MM	1
632	330833 BASE ASS'Y (F)	1



Rev.4

形名
CR13V2