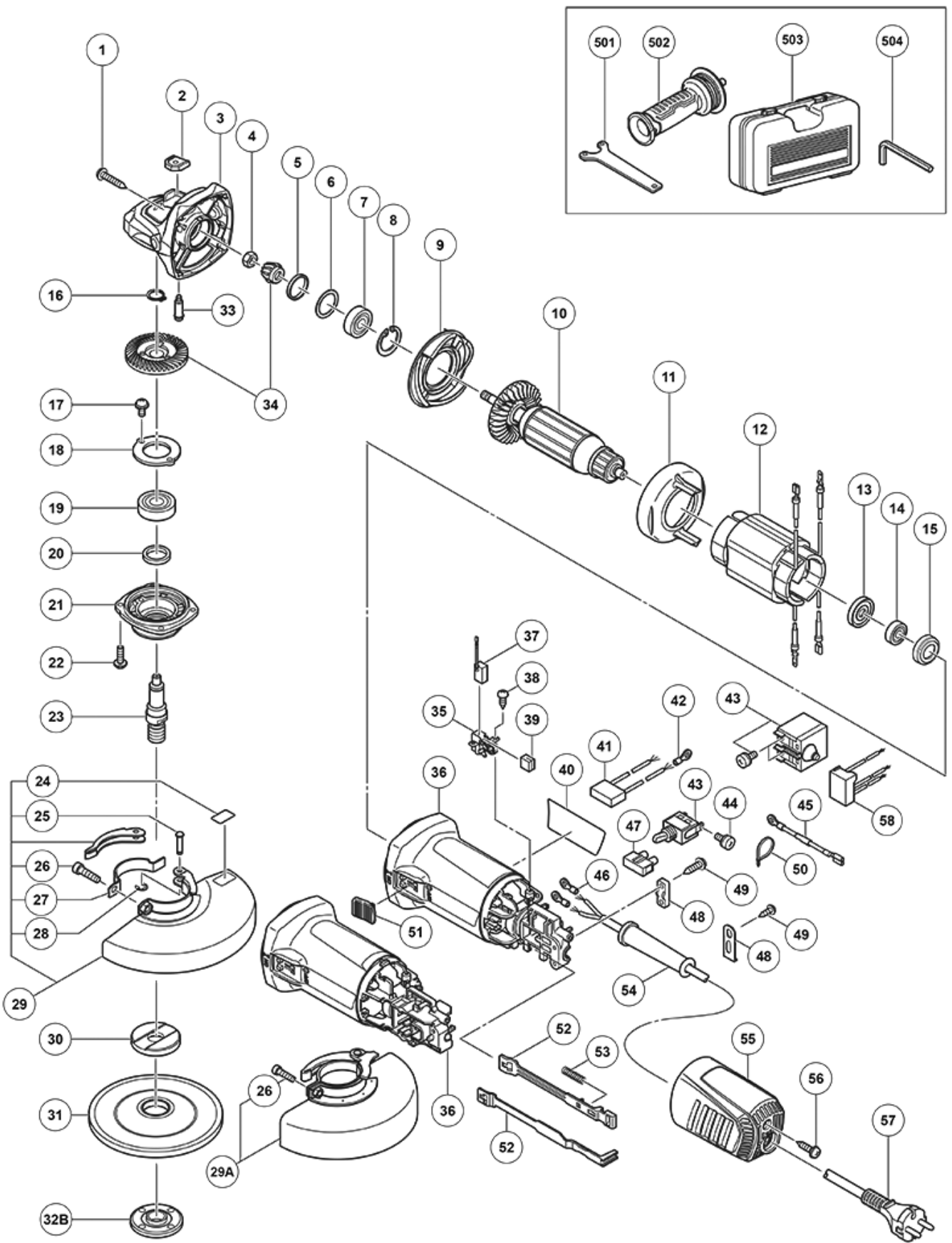


nÂ°	Artikel	Aantal gebruikt
1	307028 TAPPING SCREW (W/FLANGE) D4X25 (BLACK)	4
2	336535 PUSHING BUTTON	1
3	336870 GEAR COVER ASS'Y	1
4	301941 SPECIAL NUT M7	1
5	308543 SEAL RING (A)	1
6	980866 WASHER (C)	1
7	629VVM BALL BEARING 629VVMC2EPS2L	1
8	939554 RETAINING RING FOR D26 HOLE (10 PCS)	1
9	336542 DIFFUSER	1
10	360970E ARMATURE 230 VOLT	1
10	360970D ARMATURE 220V	1
10	360970F ARMATURE 240V	1
10	360970C ARMATURE 110V-120V	1
11	336530 FAN GUIDE	1
12	340870F STATOR 240V	1
12	340870E STATOR ASS'Y 230 VOLT	1
12	340936E STATOR 230 VOLT NEW	1
12	340870D STATOR 220V	1
12	340870B STATOR 110V	1
13	336536 DUST SEAL	1
14	336871 BALL BEARING 698SS	1
15	309929 RUBBER BUSHING	1
16	939542 RETAINING RING FOR D12 (10 PCS)	1
17	991207 SEAL LOCK SCREW M4X8 (W/SP WASHER)	2
18	316490 BEARING COVER	1
19	6201VV BALL BEARING 6201VVMCPS2L	1
20	301946 FELT PACKING	1
21	336538 PACKING GLAND	1
22	307127 SEAL LOCK SCREW (W/SP. WASHER) M4X12	4
23	336539 SPINDLE	1
24	311492 LABEL	1
25	311744 SET PIN	1
26	316107 HEX. HOLE BOLT M5X20 (W/WASHERS) (OLD 900162-05020)	1
27	311491 SET PIECE (B)	1
28	874759 RETAINING RING (E-TYPE) FOR D2.5	1
29A	337231 WHEEL GUARD ASS'Y NEW	1
30	310338 SUPER WHEEL WASHER	1
30	937817Z WHEEL WASHER	1

nÂ°	Artikel	Aantal gebruikt
31	316822 D. C. WHEELS 125MM A36Q (25 PCS.)	1
32B	339579 WHEEL NUT M14 NEW	1
33	301943 LOCK PIN	1
34	336531 GEAR SET	1
35	336537 BRUSH HOLDER	2
36	336541 HOUSING	1
36	370046 HOUSING NEW	1
37	999088 CARBON BRUSH	2
38	328210 TAPPING SCREW D3X8	4
39	336872 CUSHION SPONGE	2
41	930039 NOISE SUPPRESSOR	1
41	370051 NOISE SUPPRESSOR NEW	1
43	370015 PUSHING BUTTON SWITCH NEW	1
43	314603 SWITCH (1P SOLDER TYPE)	1
44	980060 MACHINE SCREW (W/WASHER) M3.5X5	2
45	336873 INTERNAL WIRE NEW	1
46	311741 TERMINAL	2
46	980063 TERMINAL	1
47	938307 PILLAR TERMINAL	1
48	338334 CORD CLIP NEW	1
48	937631 CORD CLIP	1
49	984750 TAPPING SCREW (W/FLANGE) D4X16	2
49	305720 TAPPING SCREW D4X12 (W/FLANGE)	1
50	975144 @ CABLE TIE	1
51	336533 SLIDE SWITCH KNOB	1
52	370048 SLIDE BAR NEW	1
52	336534 SLIDE BAR	1
53	314429 SPRING	1
54	953327 CORD ARMOR D8.8	1
54	938051 CORD ARMOR D10.1	1
55	336532 TAIL COVER	1
55	370047 TAIL COVER NEW	1
56	307811 TAPPING SCREW D4X16 (W/FLANGE) (BLACK) (OLD 930446)	1
57	500409Z CORD	1
57	500439Z CORD FOR AUS (OLD 500226Z/500411Z)	1
57	500247Z CORD (NEW 714500)	1
57	500470Z CORD	1
57	500447Z CORD 2,5M 2 X 1.0 H05VV-F (OLD 500395Z)	1

nÂ°	Artikel	Aantal gebruikt
57	500468Z CORD	1
58	370049 VARISTOR (A) NEW	1
501	938332Z WRENCH	1
502	336865 SIDE HANDLE (VIBRATION-ABSORBING) (OLD 325496)	1
503	336874 CASE	1
504	944458 HEX. BAR WRENCH 4MM	1
612	937826Z WASHER NUT	1
613	937825Z RUBBER PAD	1
614	332787 WHEEL GUARD BASE SET	1
615	332788 WHEEL GUARD (FOR CUTTING)	1
616	324688 SILICON RUBBER (B)	1



Rev.6

MODEL
G13SW