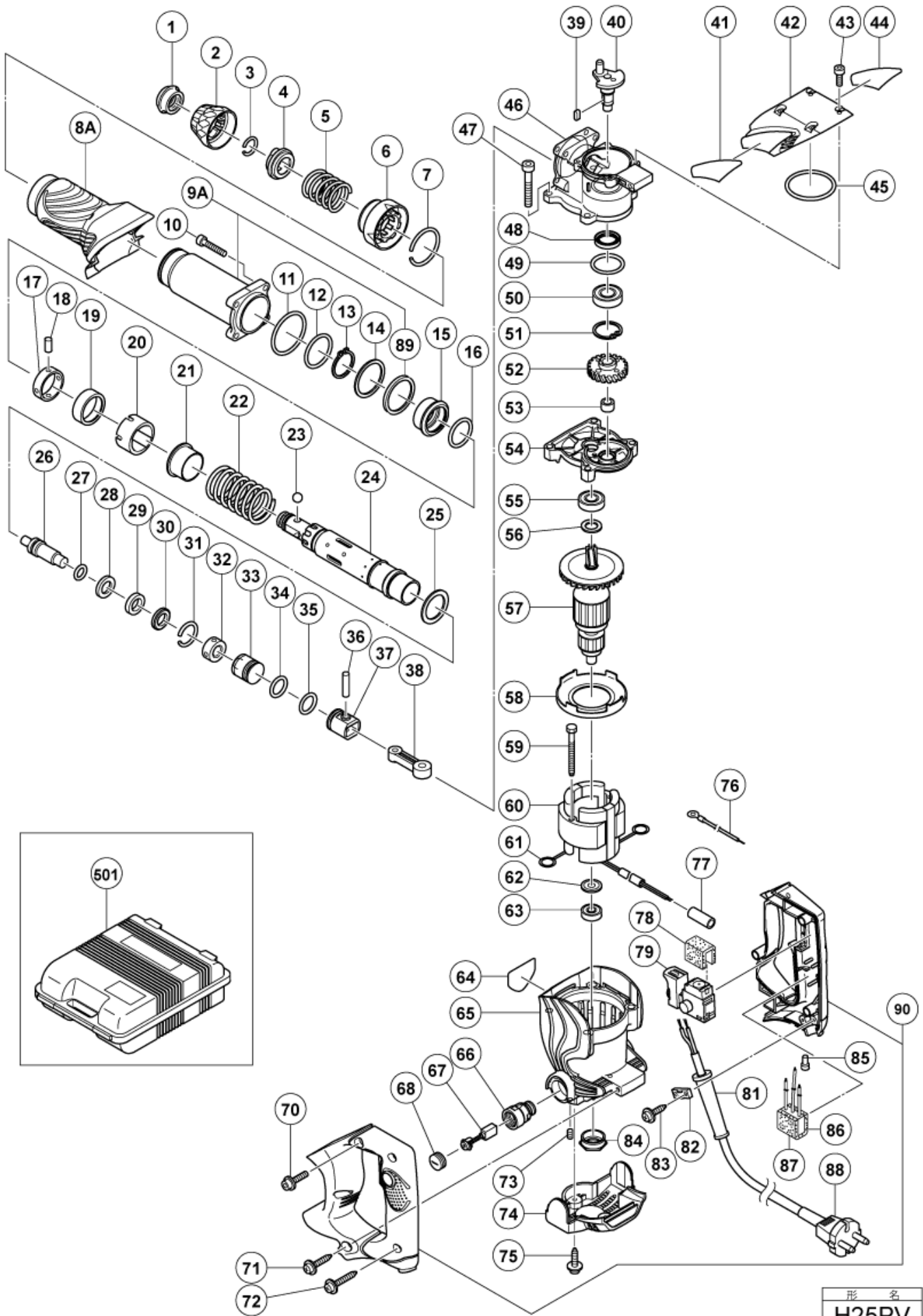


nÂ°	Artikel	Aantal gebruikt
1	323078 FRONT CAP	1
2	323077 GRIP	1
3	306340 STOPPER RING	1
4	323076 BALL HOLDER	1
5	323075 RETAINER SPRING	1
6	323074 LOCK SLEEVE	1
7	323073 RING (A)	1
8A	335208 CYLINDER CASE COVER (LIGHT GREEN) (OLD 323093)	1
9A	325256 CYLINDER CASE ASS'Y	1
10	321313 SEAL LOCK HEX. SOCKET HD. BOLT M6X22	4
11	882874 O-RING (S-46)	1
12	984483 O-RING (S-36)	1
13	962553 RETAINING RING FOR D28 SHAFT	1
14	323071 WASHER	1
15	323069 CYLINDER HOLDER	1
16	323070 O-RING (A)	1
17	323080 NEEDLE HOLDER	1
18	991449 NEEDLE ROLLER	4
19	323081 NEEDLE COVER	1
20	323065 SLIDE SLEEVE (B)	1
21	323064 SLIDE SLEEVE (A)	1
22	323067 SPRING (A)	1
23	959156 STEEL BALL D7.0 (10 PCS)	2
24	323056 CYLINDER	1
25	323068 THRUST WASHER	1
26	323057 SECOND HAMMER	1
27	323058 O-RING (C)	1
28	323059 DAMPER WASHER	1
29	323060 DAMPER	1
30	323061 DAMPER HOLDER	1
31	323062 STOPPER RING	1
32	323063 SLIDE RING	1
33	323066 STRIKER	1
35	319577 O-RING (I.D.19.2)	1
36	319581 PISTON PIN	1
37	319580 PISTON	1
38	319585 CONNECTING ROD	1
39	944109 FEATHER KEY 3X3X8	1

nÂ°	Artikel	Aantal gebruikt
40	323054 CRANK SHAFT	1
42	323079 CRANK CASE COVER	1
43	983162 SEAL LOCK HEX. SOCKET HD. BOLT M4X12	4
44	HITACHI LABEL	1
45	980715 O-RING (S-48)	1
46	323053 CRANK CASE	1
47	949692 HEX.SOCKET HD.BOLT M6X35 (10 PCS)	4
48	981851 OIL SEAL (B)	1
49	872767 O-RING (S-32)	1
50	6002DD BALL BEARING 6002DDUCMPS2S	1
51	948001 RETAINING RING D32 HOLE	1
52	323055 FIRST GEAR	1
53	939299 NEEDLE BEARING (M661)	1
54	323084 GEAR COVER	1
55	6001DD BALL BEARING 6001DDUCMPS2S (OLD 980925)	1
56	971736 WASHER (B)	1
57	360660E ARMATURE 220-230 VOLT	1
57	360660C @ ARMATURE 110-115 VOLT	1
57	360660F ARMATURE 240V	1
58	323083 FAN GUIDE	1
59	980864 @ HEX.HD. TAPPING SCREW D5X40	2
60	340593F STATOR ASS'Y 240V	1
60	340593C @ STATOR ASS'Y 110-115 VOLT	1
60	340593E STATOR ASS'Y 220-230 VOLT	1
61	930703 BRUSH TERMINAL	2
62	982631 WASHER (A)	1
63	608VVM BALL BEARING 608VVC2PS2L	1
64	NAME PLATE	1
65	323082 HOUSING ASS'Y	1
66	958900 BRUSH HOLDER	2
67	999056 CARBON BRUSH (1 PAIR)	2
68	945161 BRUSH CAP	2
70	994192 HEX.SOCKET HD.BOLT	2
71	302089 TAPPING SCREW (W/FLANGE) D5X20 (BLACK)	2
72	307028 TAPPING SCREW (W/FLANGE) D4X25 (BLACK)	3
73	938477 HEX.SOCKET SET SCREW M5X8	2
74	323085 TAIL COVER	1
75	307811 TAPPING SCREW D4X16 (W/FLANGE) (BLACK) (OLD 930446)	2

nÂ°	Artikel	Aantal gebruikt
76	994190 INTERNAL WIRE	1
77	321322 VINYL TUBE	1
79	323086 SWITCH (1P PILLAR TYPE)	1
81	953327 CORD ARMOR D8.8	1
82	960266 CORD CLIP	1
83	984750 TAPPING SCREW (W/FLANGE) D4X16	2
84	310111 BEARING BUSH (B)	1
85	959140 CONNECTOR 50091 (10 PCS.)	1
86	994273 NOISE SUPPRESSOR	1
87	317492 SUPPORT (B)	1
88	500446Z CORD FOR GBR 230V	1
88	500454Z CORD 5M 2 X1.0 HO7RN-F (W/O PLUG)	1
88	500439Z CORD FOR AUS (OLD 500226Z/500411Z)	1
88	500390Z CORD 5M 2 X 1.5 FOR HOL (NEW 714520)	1
89	325257 DAMPER (A)	1
90	335207 HANDLE (A+B) SET LIGHT GREEN	1
501	323090 CASE	1
601	981840 GREASE (FG-6A) (30G)	1
602	308471 GREASE FOR HAMMER DRILL (70G)	1
603	980927 GREASE FOR IMPACT DRILL (FG-6A) (500G)	1
604	303046 BULL POINT (SDS+) 250MM(ROUND SHANK TYPE)	1



Rev.3

形名  
H25PV