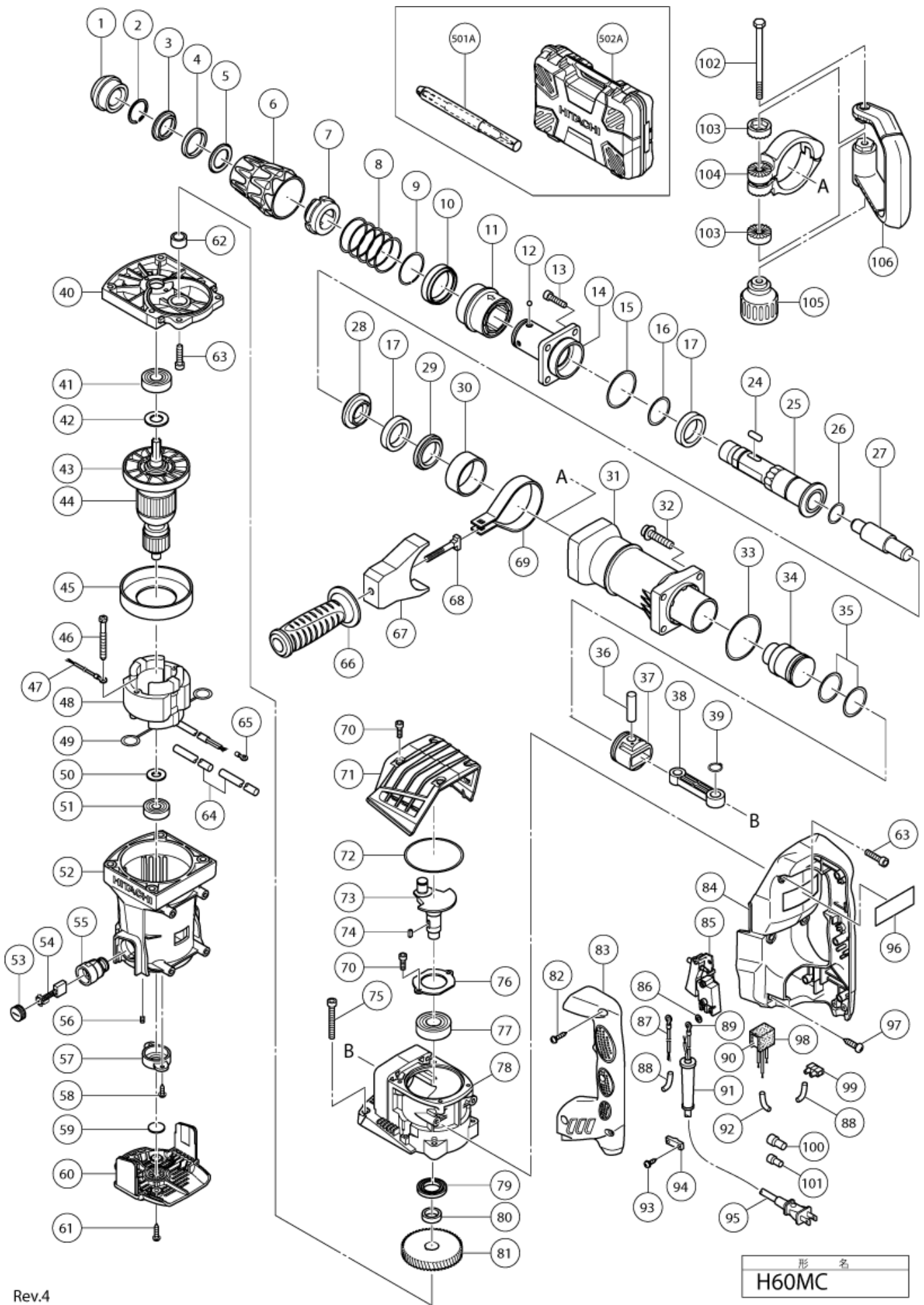


nÂ°	Artikel	Aantal gebruikt
1	333211 FRONT CAP	1
2	320846 O-RING (I.D.26)	1
3	333685 DAMPER HOLDER (A)	1
4	330175 DAMPER (A)	1
5	333686 DAMPER HOLDER (B)	1
6	333192 GRIP (A)	1
7	320804 NEEDLE HOLDER	1
8	333221 SPRING (A)	1
9	333255 STOPPER RING	1
10	333687 BALL HOLDER	1
11	333197 GRIP (B)	1
12	959150 STEEL BALL D6.35 (10 PCS.)	4
13	985479 SEAL LOCK HEX. SOCKET HD. BOLT M8X25	4
14	333195 FRONT COVER	1
15	317119 O-RING (S-56)	1
16	872767 O-RING (S-32)	1
17	333217 DAMPER	2
24	331536 NEEDLE ROLLER D8X20	2
25	333191 RETAINER SLEEVE	1
26	872470 O-RING (S-26)	1
27	333206 SECOND HAMMER	1
28	333216 HAMMER HOLDER	1
29	333218 DAMPER WASHER	1
30	333219 SLEEVE	1
31	333209 CYLINDER CASE	1
32	990083 HEX.SOCKET SCREW	4
33	956996 O-RING (1AS-60)	1
34	333205 STRIKER	1
35	985454 O-RING (A) FPM810	2
36	301509 PISTON PIN	1
37	317084 PISTON	1
38	317082 CONNECTING ROD	1
39	939543 RETAINING RING FOR D14 (10 PCS)	1
40	333229 GEAR COVER ASS'Y	1
41	6203DD BALL BEARING 6203DDUCMAV2S	1
42	333222 BEARING WASHER	1
43	333196 FAN	1
44	360899D ARMATURE ASS'Y 127V	1

nÂ°	Artikel	Aantal gebruikt
44	360899E ARMATURE 220-230 VOLT	1
44	360899G ARMATURE ASS'Y 120V	1
44	360899F ARMATURE ASS'Y 240V	1
44	360899C ARMATURE ASS'Y 110 VOLT NEW	1
45	333210 FAN GUIDE	1
46	953121 HEX.HD. TAPPING SCREW D5X50	2
47	324122 INTERNAL WIRE 235L	0
48	340780F STATOR ASS'Y 240V	1
48	340780D STATOR ASS'Y 127V	1
48	340780G STATOR ASS'Y 120V	1
48	340780C STATOR ASS'Y 110 VOLT NEW	1
48	340780E STATOR ASS'Y 220V-230V	1
48	340790E STATOR ASS'Y 220-230 VOLT	1
49	945932 BRUSH TERMINAL	2
50	944954 BEARING WASHER	1
51	6201DD BALL BEARING 6201DDUCMAV2S	1
52	333213 HOUSING ASS'Y	1
53	940540 BRUSH CAP	2
54	999074 CARBON BRUSH A.S. TYPE (OLD 937943Z)	1
54	999044 CARBON BRUSH (1 PAIR)	1
55	980487 BRUSH HOLDER	2
56	938477 HEX.SOCKET SET SCREW M5X8	2
57	328918 BEARING HOLDER	1
59	333225 DUST SEAL	1
60	333193 TAIL COVER	1
61	302089 TAPPING SCREW (W/FLANGE) D5X20 (BLACK)	2
62	985442 NEEDLE BEARING NTN BK1512	1
63	987707 SEAL LOCK HEX. SOCKET HD. BOLT M6X25	4
64	326541 VINYL TUBE (I.D.9.5XTO.56X85)	2
65	930804 TERMINAL M4.0 (10 PCS.)	1
66	330209 SIDE HANDLE	1
67	333198 MOUNT	1
68	333227 HANDLE BOLT	1
69	333226 BAND	1
70	990079 SEAL LOCK HEX. SOCKET HD. BOLT M5X16	6
71	333194 CRANK COVER	1
72	326257 O-RING (I.D. 74.5)	1
73	333204 CRANK SHAFT	1

nÂ°	Artikel	Aantal gebruikt
74	940533 FEATHER KEY 3X3X10	1
75	986491 SEAL LOCK HEX. SOCKET HD. BOLT M6X50	4
76	333220 BEARING COVER	1
77	6204DD BALL BEARING 6204DDUCMPS2S	1
78	333186 CRANK CASE	1
79	995403 OIL SEAL	1
80	995402 DISTANCE RING (C)	1
81	333207 FIRST GEAR	1
82	305490 TAPPING SCREW D4X30 (W/FLANGE) BLACK	4
83	333189 HANDLE COVER	1
84	333187 HANDLE	1
85	306143 SWITCH B (1P SCREW TYPE) W/LOCK	1
86	949423 WASHER M4 (10 PCS)	0
87	981974 INTERNAL WIRE	1
87	306681 INTERNAL WIRE FOR GBR	1
88	VINYL TUBE (I.D.7XT0.5X30)	2
89	980063 TERMINAL	1
90	325566 NOISE SUPPRESSOR	0
91	938051 CORD ARMOR D10.1	1
91	953327 CORD ARMOR D8.8	1
92	TUBE (A) I.D.7XT0.25X70	1
93	984750 TAPPING SCREW (W/FLANGE) D4X16	2
94	960266 CORD CLIP	1
95	500408Z CORD	1
95	500390Z CORD 5M 2 X 1.5 FOR HOL (NEW 714520)	1
95	500467Z CORD FOR GBR 110 VOLT	1
95	500406Z CORD	1
95	500235Z CORD 5M 2 X 1.0 FOR EUROPE (NEW 714500)	1
95	500206Z CORD	1
95	500434Z CORD	1
95	500440Z CORD 5M 2 X 1,0 W/PLUG 13A/250V FOR GBR	1
95	500457Z CORD	1
95	500446Z CORD FOR GBR 230V	1
95	500475Z CORD	1
95	500487Z CORD	1
96	NAME PLATE	1
97	333364 TAPPING SCREW D6X30	4
98	317492 SUPPORT (B)	0

nÂ°	Artikel	Aantal gebruikt
99	938307 PILLAR TERMINAL	0
100	959141 CONNECTOR 50092 (10 PCS) (OLD 939558)	0
101	959140 CONNECTOR 50091 (10 PCS.)	0
102	333228 BOLT M8	1
103	333202 HANDLE HOLDER (B)	2
104	334578 HANDLE HOLDER	1
105	333201 GRIP	1
106	333199 SIDE HANDLE	1
502A	333190 CASE	1
601	333214 SIDE HANDLE ASS'Y	1
602	334579 SIDE HANDLE ASS'Y (OLD 333214)	1
603	981840 GREASE (FG-6A) (30G)	1
604	308471 GREASE FOR HAMMER DRILL (70G)	1
605	980927 GREASE FOR IMPACT DRILL (FG-6A) (500G)	1
606	313471 BULL POINT (SDS MAX) 280L	1
607	313472 BULL POINT (SDS MAX) 400L	1
608	313473 COLD CHISEL (SDS MAX) 280MM	1
609	313474 COLD CHISEL (SDS MAX) 400MM	1
610	313475 CUTTER (SDS MAX) W50X400L	1
611	313476 SCOOP (SDS MAX) 400L	1
612	313477 BUSHING TOOL (SDS MAX)	1
613	313478 RAMMER (SDS MAX) 150MMX150MM	1
614	313479 SHANK (SDS MAX)FOR RAMMER,BUSHING TOOL	1



Rev.4