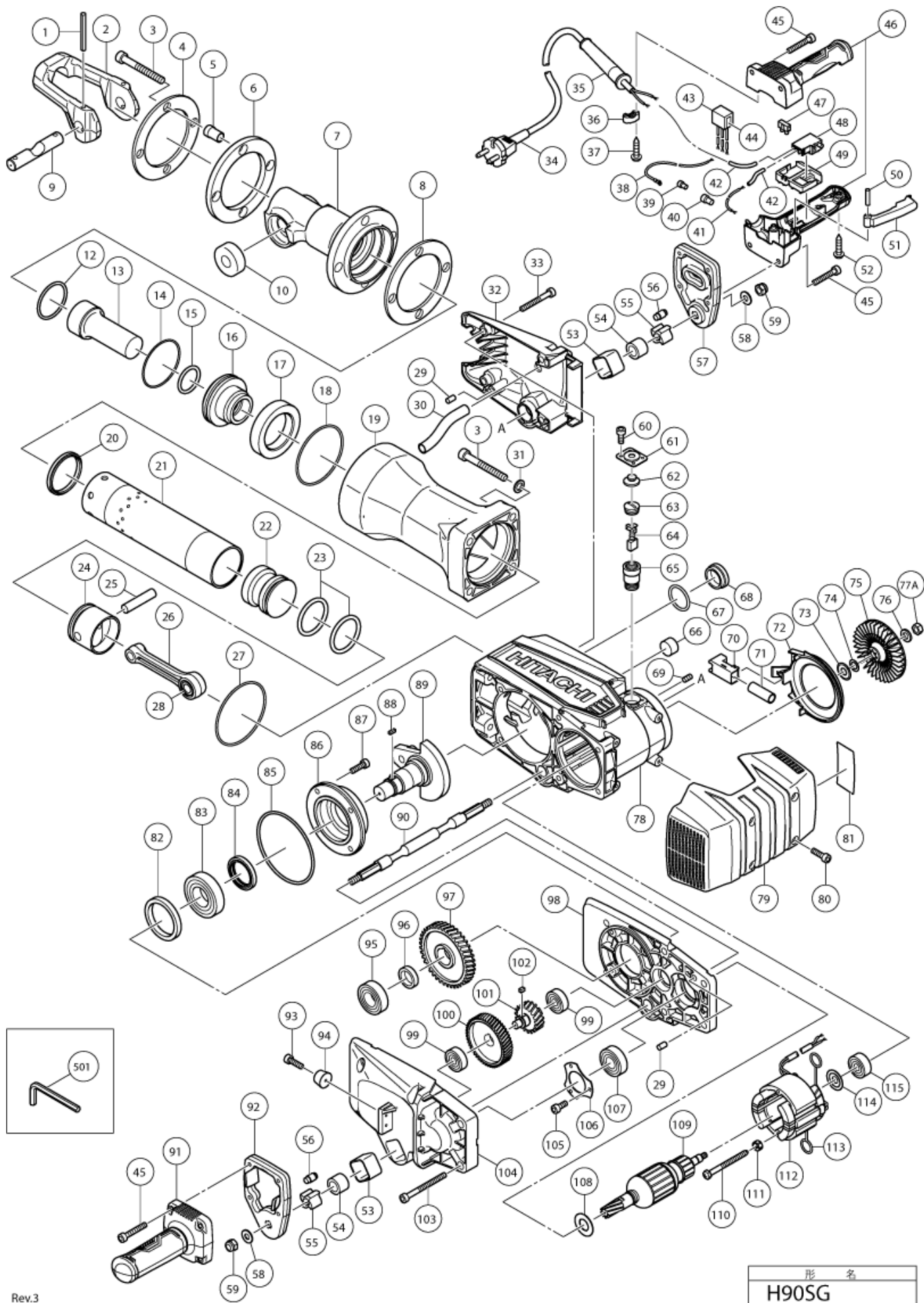


nÂ°	Artikel	Aantal gebruikt
1	994416 ROLL PIN D6X55	2
2	337040 RETAINER NEW	1
3	337028 NYLOCK HIGH TENSION BOLT M12X65 NEW APR	8
4	337037 DAMPER PLATE	1
5	337036 COLLAR NEW	4
6	337035 FRONT DAMPER (A)	1
7	337030 FRONT COVER NEW	1
8	337034 FRONT DAMPER (B)	1
9	337041 LEVER PIN NEW	1
10	337039 RETAINER DAMPER (A) NEW APR	2
12	993188 O-RING	1
13	337033 SECOND HAMMER	1
14	992865 O-RING (D)	1
15	337032 O-RING (A)	1
16	337031 HAMMER HOLDER	1
17	992859 DAMPER	1
18	337029 O-RING (C)	1
19	337026 CYLINDER CASE	1
20	337025 CYLINDER DAMPER	1
21	337023 CYLINDER	1
22	337024 STRIKER	1
23	337021 O-RING	2
24	337020 PISTON	1
25	337022 PISTON PIN	1
26	337019 CONNECTING ROD ASS'Y	1
27	319685 O-RING	1
28	956485 NEEDLE BEARING NSK TORR RLM2220	1
29	949480 PIN D8X14 (10 PCS) (OLD 949480Z)	2
30	326541 VINYL TUBE (I.D.9.5XTO.56X85)	1
31	337027 WASHER D12 NEW	4
32	337012 FAN COVER ASS'Y NEW	1
33	985226 SEAL LOCK BOLT M10X40	4
34	930053 CORD	1
34	500488Z CORD (BRA)	1
34	321537 CORD 4M 2 X 1,5 H07RN-F (NEW 714520)	1
34	500206Z CORD	1
34	337367 CORD	1
34	337366 CORD	0

nÂ°	Artikel	Aantal gebruikt
34	500467Z CORD FOR GBR 110 VOLT	1
34	337365 CORD	1
35	337049 CORD ARMOR D14.2 NEW	1
35	337050 CORD ARMOR D10.7 NEW MAY	1
35	337812 CORD ARMOR D8.2	1
36	960266 CORD CLIP	1
36	337053 CORD CLIP NEW	1
37	956636 TAPPING SCREW (NEW 306999)	2
38	337056 INTERNAL WIRE 350L NEW	1
39	959140 CONNECTOR 50091 (10 PCS.)	1
40	959141 CONNECTOR 50092 (10 PCS) (OLD 939558)	1
41	337054 INTERNAL WIRE WHITE NEW	1
41	337055 INTERNAL WIRE BLACK NEW	1
42	996438 VINYL TUBE (A) I.D.7XTO.5X50	2
43	930153 SUPPORT (B)	1
44	317491 NOISE SUPPRESSOR	1
45	993496 SEAL LOCK HEX. SOCKET HD. BOLT M6X30	8
46	337057 HANDLE (A+B) SET	1
47	938307 PILLAR TERMINAL	1
48	337051 SWITCH	1
49	337052 SUPPORT NEW	1
50	337363 PIN D6X28 NEW	1
51	337058 SWITCH LEVER NEW JUL	1
52	307028 TAPPING SCREW (W/FLANGE) D4X25 (BLACK)	2
53	337013 HOLDER (B) NEW	2
54	337042 HANDLE DAMPER (B) NEW JUL	2
55	337044 HOLDER (A) NEW	2
56	337045 HANDLE DAMPER (A) NEW MAY	8
57	337046 HANDLE HOLDER (B) NEW	1
58	949434 BOLT WASHER M10 (10 PCS)	2
59	337048 LOCK NUT (NYLON INSERT) M10 NEW	2
60	878356 SEAL LOCK HEX. SOCKET HD. BOLT M4X10	4
61	337017 CAP COVER NEW	2
62	992894 CAP RUBBER	2
63	937949 BRUSH CAP	2
64	999086 CARBON BRUSH A.S. TYPE (1 PAIR)	2
65	305597 BRUSH HOLDER	2
66	336997 FELT PACKING (A) NEW	1

nÂ°	Artikel	Aantal gebruikt
67	980717 O-RING (S-38)	1
68	990945 OIL CAP ASS'Y (OLD 982646)	1
69	938477 HEX.SOCKET SET SCREW M5X8	2
70	336999 SLEEVE NEW	1
71	336998 VINYL TUBE L45 NEW	1
72	337010 FAN GUIDE NEW	1
73	337387 DUST WASHER (FW)	1
74	337386 RUBBER WASHER (FW)	1
75	337011 FAN	1
76	323212 BOLT WASHER M8 (BLACK)	1
77A	327325 NUT M8 (NEW 6684612)	1
78	336996 HOUSING ASS'Y	1
79	337018 HOUSING COVER NEW	1
80	990935 SEAL LOCK HEX. SOCKET HD. BOLT M6X16	4
81	NAME PLATE	1
82	337003 DISTANCE RING	1
83	6207VV BALL BEARING 6207VVCMP2S	1
84	337364 OIL SEAL	1
85	337004 O-RING	1
86	337002 BEARING BOSS NEW	1
87	305603 SEAL LOCK HEX. SOCKET HD. BOLT M8X18	4
88	931008 FEATHER KEY 4X4X12	1
89	337005 CRANK SHAFT	1
90	337043 HANDLE SHAFT NEW	1
91	337059 SIDE HANDLE	1
92	337047 HANDLE HOLDER (A) NEW	1
93	333320 SEAL LOCK HEX. SOCKET HD. BOLT M4X20 NEW	2
94	305629 STOPPER	2
95	6205VV BALL BEARING 6205VVCMP2S	1
96	337007 DISTANCE RING (A)	1
97	337006 FINAL GEAR	1
98	337000 INNER COVER NEW	1
99	6301VV BALL BEARING 6301VVCMP2S	2
100	337015 FIRST GEAR	1
101	337014 SECOND GEAR	1
102	984487 FEATHER KEY 5X5X8	1
103	992851 SEAL LOCK HEX. SOCKET HD. BOLT M10X60	6
104	337016 GEAR COVER ASS'Y NEW	1

nÂ°	Artikel	Aantal gebruikt
105	991690 SEAL LOCK HEX. SOCKET HD. BOLT M5X12	3
106	337001 BEARING COVER (A) NEW	1
107	6204DD BALL BEARING 6204DDUCMPS2S	1
108	337008 BEARING WASHER (A) NEW JUN	1
109	360974F ARMATURE 240V	1
109	360974D ARMATURE 127V	1
109	360974C ARMATURE 110 VOLT NEW	1
109	360974U ARMATURE ASS'Y 120V	1
109	360974E ARMATURE 220-230 VOLT	1
110	961501 HEX .HD. TAPPING SCREW D5X60	2
111	956764 SPECIAL WASHER	2
112	340876C STATOR ASS'Y 110 VOLT NEW	1
112	340876H STATOR ASS'Y 220V-230V	1
112	340876G STATOR ASS'Y 120V	1
112	340876F STATOR ASS'Y 240V	1
112	340876E STATOR ASS'Y 220-230 VOLT	1
112	340876D STATOR ASS'Y 127V	1
112	340876J STATOR ASS'Y 240V	1
113	945932 BRUSH TERMINAL	2
114	337009 BEARING WASHER (B) NEW JUN	1
115	6301DD BALL BEARING 6301DDUCMPS2S (OLD 994272)	1
501	944459 HEX. BAR WRENCH 5MM	1
601	980927 GREASE FOR IMPACT DRILL (FG-6A) (500G)	1
602	313692 WRENCH	1
603	985230 BULL POINT 20-1/2" (HEX. SHANK TYPE)	1
604	996372 BULL POINT 410MM (HEX. SHANK TYPE)	1
605	985231 COLD CHISEL 520MM (HEX. SHANK TYPE)	1
606	985232 CUTTER W75X520MM (HEX. SHANK TYPE)	1
607	985233 SCOOP 546L (HEX. SHANK TYPE)	1
608	305880 RAMMER 200MM	1
609	308092 SHANK	1



Rev.3