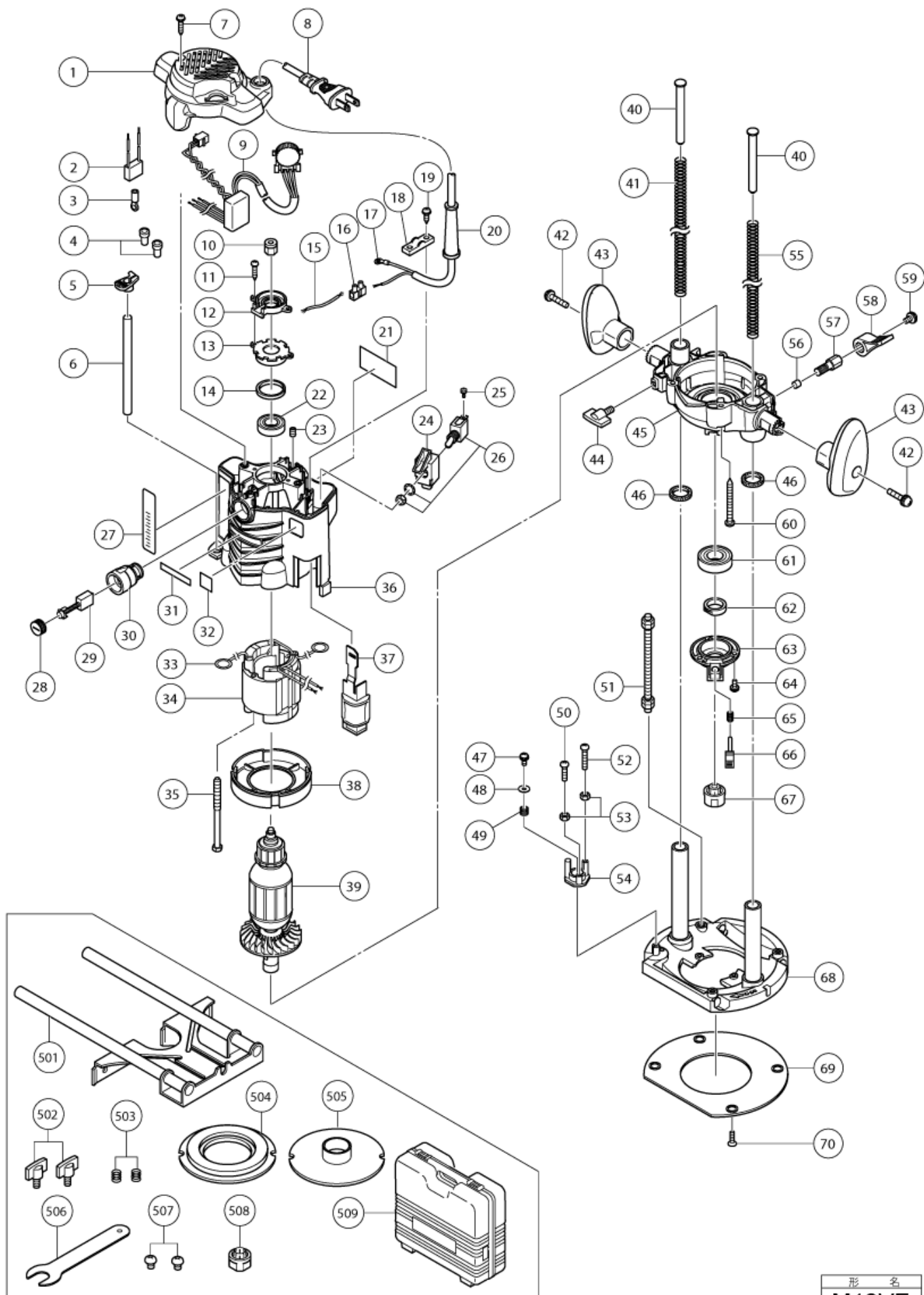


nÂ°	Artikel	Aantal gebruikt
1	331809 TOP COVER	1
2	930039 NOISE SUPPRESSOR	1
3	930804 TERMINAL M4.0 (10 PCS.)	1
4	959141 CONNECTOR 50092 (10 PCS) (OLD 939558)	2
5	331823 MARKER	1
6	325196 STOPPER POLE	1
7	301653 TAPPING SCREW (W/FLANGE) D4X20 (BLACK)	2
8	500455Z CORD	1
8	500248Z CORD FOR SUI	1
8	500474Z CORD (OLD 500214Z) (NEW 714520)	1
8	500242Z CORD	1
8	500435Z CORD 2,5M 2 X 1.0 H05VV-F W/PLUG 13A/250V GBR	1
8	500439Z CORD FOR AUS (OLD 500226Z/500411Z)	1
8	500237Z CORD 2,5M 2 X 1.0 W/O PLUG (OLD 500396Z,971517Z,971675Z)	1
8	500247Z CORD (NEW 714500)	1
8	500423Z @ CORD 2,5M 2 X 1.0 H05VV-F W/PLUG 13A/250V (OLD 500223Z)	1
8	500463Z CORD FOR GBR 110 VOLT	1
8	500234Z CORD 5M 2 X 1.0 FOR INA,SUR,MLT H05VV-F (NEW 714500)	1
9	331810 CONTROLLER 100-120 VOLT	1
9	331811 CONTROLLER 220-240 VOLT	1
10	325475 MAGNET	1
11	954004 TAPPING SCREW D4X16 (OLD 337992)	2
12	331822 MP HOLDER	1
13	325169 BEARING BUSHING	1
14	325184 RUBBER RING	1
15	331989 INTERNAL WIRE BLEU	1
15	331979 INTERNAL WIRE (WHITE)	1
16	938307 PILLAR TERMINAL	1
17	980063 TERMINAL	1
18	937631 CORD CLIP	1
19	984750 TAPPING SCREW (W/FLANGE) D4X16	2
20	938051 CORD ARMOR D10.1	1
20	953327 CORD ARMOR D8.8	1
21	NAME PLATE	1
22	6200VV BALL BEARING 6200VVCMP52L	1
23	938477 HEX.SOCKET SET SCREW M5X8	2
24	331813 SWITCH HOLDER	1
25	307887 MACHINE SCREW (W/WASHER) M3.5X6	2

nÂ°	Artikel	Aantal gebruikt
26	331986 SWITCH (1P SCREW TYPE) 110 VOLT	1
26	331812 SWITCH (1P SCREW TYPE)	1
27	331821 SCALE (INCH) NEW	1
27	331820 SCALE (MM)	1
28	945161 BRUSH CAP	2
29	999038 CARBON BRUSH (1 PAIR)	2
30	938241 BRUSH HOLDER (OLD 938241Z)	2
31	HITACHI LABEL	1
32	331825 LABEL NEW	1
33	937623 BRUSH TERMINAL (OLD 976831)	2
34	340659D STATOR ASS'Y 110-120 VOLT NEW	1
34	340659L STATOR ASS'Y 220-230 VOLT	1
34	340659J STATOR ASS'Y 220V-230V	1
34	340659K STATOR ASS'Y 240V	1
34	340659M STATOR ASS'Y 240V	1
35	961400 HEX.HD. TAPPING SCREW D5X70	2
36	331814 HOUSING ASS'Y	1
37	325960 LEVER	1
38	331980 FAN GUIDE	1
39	360886U ARMATURE ASS'Y 110-120 VOLT	1
39	360886E ARMATURE 220-240 VOLT	1
40	325180 SPRING GUIDE	2
41	303316 SPRING	1
42	307443 SCREW M6X30 (BLACK)	2
43	331819 HANDLE (A+B) SET	2
45	331817 END BRACKET	1
46	323426 FELT	2
47	317200 MACHINE SCREW M8X4 (W/WASHERS) (BLACK)	1
48	962569 WASHER (B) (OLD 976448)	1
49	971858 SPRING (A) (OLD 971858Z)	1
50	302196 MACHINE SCREW M5X20 BLACK	1
51	331824 SCREW M8	1
52	302197 MACHINE SCREW M5X35 BLACK	1
53	302012 NUT M5 (BLACK)	2
54	331826 STOPPER BLOCK	1
55	303317 SPRING	1
56	971848 LOCK PIECE	1
57	325187 LOCK SCREW	1

nÂ°	Artikel	Aantal gebruikt
58	323923 LEVER (A)	1
59	997314 MACHINE SCREW (OLD 303405)	1
60	307100 TAPPING SCREW D5X50	4
61	6004VV BALL BEARING 6004VVCMP2S	1
62	325186 THRUST NUT	1
63	325185 BEARING COVER (OLD 326082)	1
64	935196 MACHINE SCREW (W/WASHERS) M4X12 (BLACK)	3
65	325183 LOCK SPRING	1
66	325182 PUSHING BUTTON	1
67	323421 COLLET CHUCK 1/2"	1
68	331818 BASE	1
69	301810 SUB BASE	1
70	992013 SEAL LOCK FLAT HD. SCREW M5X14	4
501	331816 PARALLEL GUIDE	1
502	301806 WING BOLT M6X15	1
503	947859 LOCK SPRING (OLD 996224)	2
504	956756 TEMPLATE GUIDE ADAPTER	1
505	956790 TEMPLATE GUIDE D18	1
506	323295 WRENCH 23MM	1
507	949234 MACHINE SCREW M5X6 (10 PCS)	2
508	325199 COLLET CHUCK 12MM	1
601	307801 COLLET CHUCK 1/2 INCH (NEW 323421)	1
602	323293 COLLET CHUCK 1/4"	1
603	997466 DUST COLLECTION ADAPTER SET	1
604	956794 TRIMMER GUIDE	1
605	331815 CASE	1
606	318304 ADJUSTING KNOB SET	1



Rev.1

形名
M12VE