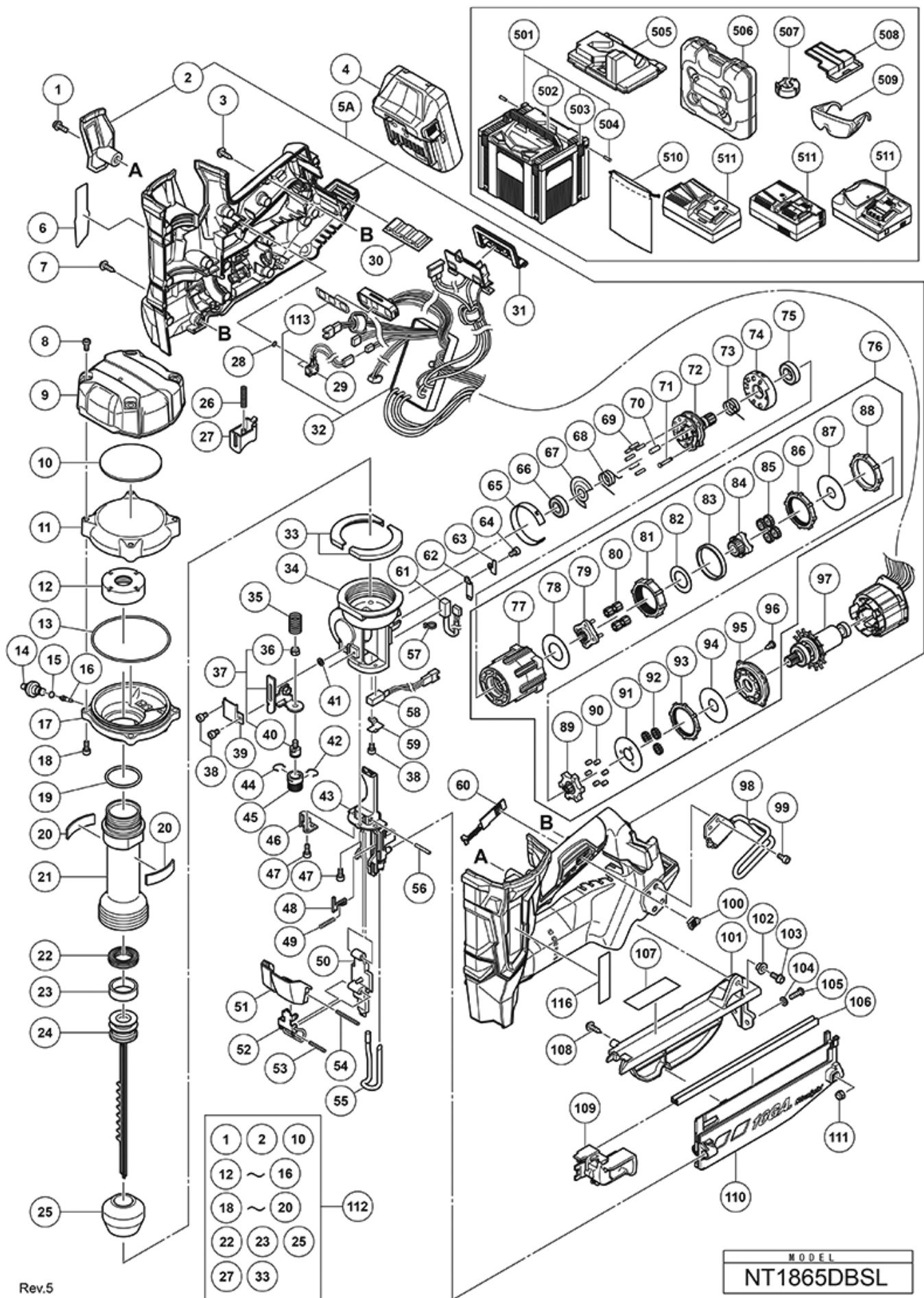


nÂ°	Artikel	Aantal gebruikt
1	880219 HEX.SOCKET HD. BOLT M5X16 (W/FLANGE) NEW	1
2	371225 HOUSING (C) NEW	1
3	301653 TAPPING SCREW (W/FLANGE) D4X20 (BLACK)	13
4	339783 BATTERY BSL 1830C (EUROPE.AUS.NZL)	2
5B	371009 HOUSING ASS'Y NEW	1
7	994806 SCREW (PLASTIC TIE) D4X20	1
8	371015 HEX.SOCKET BOLT M5 NEW	4
9	371014 TOP COVER NEW	1
10	371012 RUBBER CUSHION (C) NEW	1
11	371035 CHAMBER COVER NEW	1
12	371040 SPECIAL NUT M36 NEW	1
13	371037 O-RING (I.D. 79.5) NEW	1
14	371039 CHARGE CAP NEW	1
15	872822 O-RING (S-5)	1
16	371038 VALVE CORE NEW	1
17	371036 CHAMBER BASE NEW	1
18	949658 HEX.SOCKET HD.BOLT M5X18 (10 PCS)	4
19	371042 O-RING (I.D.32.99) NEW	1
20	371011 RUBBER CUSHION (B) NEW	2
21	371041 CYLINDER NEW	1
22	371046 X-RING NEW	1
23	371047 SLIDE RING NEW	1
24	371044 PISTON NEW	1
25	371048 PISTON BUMPER NEW	1
26	332000 SPRING (T) NEW	1
27	371021 TRIGGER NEW	1
28	371020 O-RING (I.D. 2.5) NEW	2
29	371019 SWITCH CABLE (A) NEW	1
30	332668 RUBBER CUSHION	1
31	370728 TERMINAL RUBBER (A) NEW	1
32	372186 WIRING NEW	1
33	371010 RUBBER CUSHION (A) NEW	2
34	371049 NOSE NEW	1
35	371067 SPRING NEW	1
37	371064 PUSHING LEVER ARM ASS'Y NEW	1
38	325077 SEAL LOCK HEX. SOCKET HD. BOLT M3X6	3
39	371058 PUSHING LEVER ARM HOLDER NEW	1
40	371065 PUSHING LEVER PIECE NEW	1

nÂ°	Artikel	Aantal gebruikt
41	371062 WASHER D4 NEW	1
42	886331 RATCHET SPRING	1
43	371056 BLADE GUIDE NEW	1
44	881765 RATCHET SPRING	1
45	887358 ADJUSTER	1
46	371060 PUSHING LEVER ARM HOLDER (A) NEW	1
47	886311 SEAL LOCK HEX. SOCKET HD. BOLT M4X12	3
48	371092 LOCK PLATE NEW	1
49	886305 LOCK SPRING	1
50	371069 GUIDE PLATE NEW	1
51	371078 LOCK LEVER COVER NEW	1
52	371075 LOCK LEVER NEW	1
53	371077 ROLL PIN D3X22 NEW	1
54	371080 ROLL PIN D3X32 NEW	1
55	371082 PUSHING LEVER NEW	1
56	371072 NEEDLE ROLLER D3 NEW	1
57	6696839 WIRE BAND NEW AUG	1
58	371022 SENSOR (B) NEW	1
59	371052 SENSOR HOLDER (A) NEW	1
60	331790 LEVER (C) NEW	1
61	371023 SENSOR (C) NEW	1
62	371054 ROTOR NEW	1
63	371053 SENSOR HOLDER (A) NEW	1
64	325241 SEAL LOCK HEX. SOCKET HD. BOLT M3X8	1
65	371051 SHIELD RING NEW	1
66	371033 BALL BEARING NEW	1
67	371032 WASHER (A) NEW	1
68	371027 WHEEL SPRING (A) NEW	1
69	371030 NEEDLE ROLLER D3 NEW	6
70	371031 NEEDLE ROLLER D4.5 NEW	1
71	371029 PIN (A) NEW	1
72	371026 PIN WHEEL NEW	1
73	371028 WHEEL SPRING (B) NEW	1
74	371034 POSITION DETECTOR NEW	1
75	6901VV BALL BEARING 6901VVCMP2L	1
76	371025 GEAR BOX ASS'Y NEW	1
77	GEAR CASE	1
78	WASHER (E)	1

nÂ°	Artikel	Aantal gebruikt
79	CARRIER	1
80	PLANET GEAR (C) (4 PCS.)	4
81	RING GEAR (C)	1
82	WASHER (D)	1
83	GEAR SPACER	1
84	PINION (C)	1
85	PLANET GEAR (B) (4 PCS.)	4
86	RING GEAR (B)	1
87	WASHER (C)	1
88	LOCK RING	1
89	PINION (B)	1
90	NEEDLE ROLLER (A) (6 PCS.)	6
91	WASHER (B)	1
92	PLANET GEAR (A) (3 PCS.)	3
93	RING GEAR (A)	1
94	WASHER (A)	1
95	MOTOR SPACER	1
96	TAPPING SCREW D3X8	4
97	361054 ROTOR NEW	1
98	371214 HOOK NEW	1
99	331109 LOW HEAD HEX.SOCKET BOLT M4X8 NEW	4
100	326276 LEVER (A)	1
101	371084 MAGAZINE COVER NEW	1
102	371086 DISTANCE PIECE M5 NEW	1
103	996399 HEX.SOCKET HD.BOLT M5X12 (W/FLANGE)	1
104	949431 BOLT WASHER M5 (10 PCS.)	2
105	885997 MACHINE SCREW M5X15 BLACK	2
106	886341 NAIL RAIL	1
107	372191 CAUTION LABEL (EU) NEW	1
108	307811 TAPPING SCREW D4X16 (W/FLANGE) (BLACK) (OLD 930446)	1
109	371089 NAIL FEEDER NEW	1
110	371087 MAGAZINE NEW	1
111	877371 NYLON NUT M5	1
112	372991 REPAIR PARTS SET (NT1850DBSL/ NT1865DBAL/DBSL) NEW	1
113	373658 PANEL SHEET	1
501	337528 CASE ASS'Y (STACKABLE)	1
502	336473 HANDLE	1
503	336472 LATCH	4

nÂ°	Artikel	Aantal gebruikt
504	336474 HINGE	2
505A	375577 INNER TRAY NT1850/1865DBSL (HSC) (OLD 371895)	1
507	371094 NOSE CAP NEW	1
508	329897 BATTERY COVER	1
509	875769 SAFETY GLASSES	1
510	6698667 POUCH CLOTH NEW	1
511	CHARGER (MODEL UC 18YFSL)	1
601	375605 NOSE CAP RED 5.5MM NEW	1



Rev.5