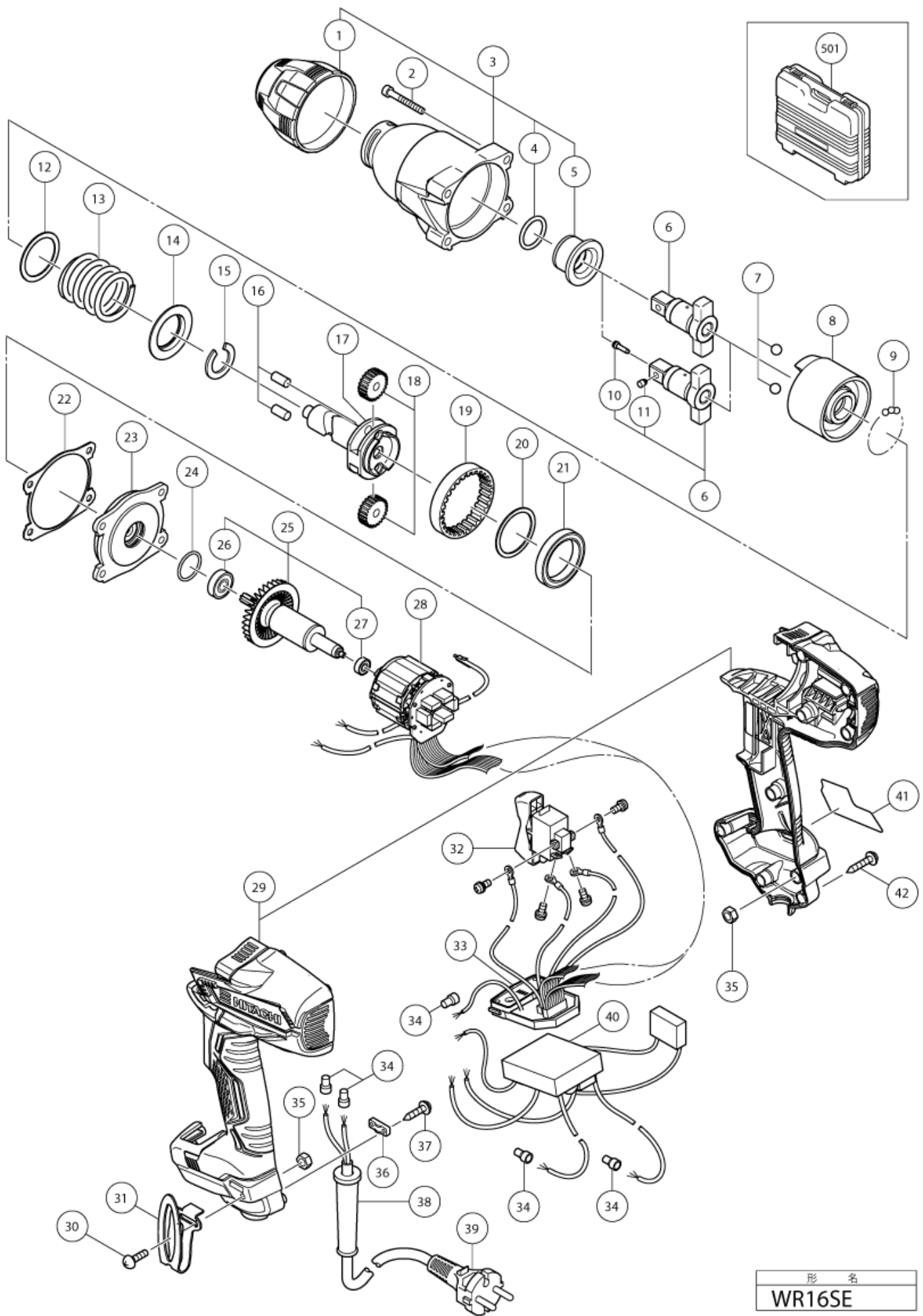


nÂ°	Artikel	Aantal gebruikt
1	337721 BUMPER (A) NEW	1
2	323753 SEAL LOCK HEX. SOCKET HD. BOLT M5X35	4
3	337195 HAMMER CASE ASS'Y NEW MAY	1
4	318704 O-RING (M)	1
5	323766 METAL	1
6	334342 ANVIL (L) ASS'Y (OLD 985207)	1
6	334341 ANVIL (L) ASS'Y	1
7	959150 STEEL BALL D6.35 (10 PCS.)	2
8	337197 HAMMER (A) NEW	1
9	959155 STEEL BALL D3.97 (10 PCS.)	2
10	323542 PIN RETAINER (OLD 985209)	1
11	323541 PLUNGER (OLD 985208)	1
12	317525 WASHER (B)	1
13	337198 HAMMER SPRING (A) NEW	1
14	317521 WASHER (A)	1
15	337201 STOPPER (A) NEW	1
16	985169 NEEDLE ROLLER	2
17	337196 SPINDLE (A) NEW	1
18	323785 IDLE GEAR SET (2 PCS)	2
19	323786 RING GEAR	1
20	337199 WASHER (C) NEW	1
21	337733 BALL BEARING 6807 NEW	1
22	337698 PACKING (A) NEW	1
23	337200 INNER COVER (A) NEW MAY	1
24	887302 O-RING (I.D. 21.5) NEW	1
25	337203 ROTOR ASS'Y NEW	1
26	608DDM BALL BEARING 608DDMC2EPS2S	1
27	333784 BALL BEARING 624DD	1
28	340882 STATOR IGBT PCB 220-240 VOLT	1
29	337734 HOUSING SET (A+B) NEW JUL	1
30	327001 TRUSS HD. SCREW M4 (BLACK)	1
31	335724 HOOK	1
32	337202 SWITCH NEW MAY	1
33	337702 CONTROLLER (A) 220-230 VOLT	1
33	337703 CONTROLLER (A) 240V	1
34	959140 CONNECTOR 50091 (10 PCS.)	5
35	327002 LOCK NUT M4 (BLACK)	2
36	937631 CORD CLIP	1

nÂ°	Artikel	Aantal gebruikt
37	984750 TAPPING SCREW (W/FLANGE) D4X16	2
38	953327 CORD ARMOR D8.8	1
38	938051 CORD ARMOR D10.1	1
39	500234Z CORD 5M 2 X 1.0 FOR INA,SUR,MLT H05VV-F (NEW 714500)	1
39	500470Z CORD	1
39	500450Z CORD 230 VOLT GBR	1
39	500461Z CORD 3M 2 X 1,0 H05VV-F W/PLUG 16A CEE FORM 2P+E FOR GBR	1
39	500439Z CORD FOR AUS (OLD 500226Z/500411Z)	1
39	500423Z @ CORD 2,5M 2 X 1.0 H05VV-F W/PLUG 13A/250V (OLD 500223Z)	1
39	500201Z CORD 3M 3 X 1,5 H05VV-F (NEW 950543Z)	1
39	500456Z CORD	1
39	500435Z CORD 2,5M 2 X 1.0 H05VV-F W/PLUG 13A/250V GBR	1
39	500240Z CORD FOR USA/CAN	1
39	500247Z CORD (NEW 714500)	1
40	337206 CONTROLLER (B) 220-240 VOLT	1
42	301653 TAPPING SCREW (W/FLANGE) D4X20 (BLACK)	8
501	337704 CASE	1



形名
WR16SE

Rev.1