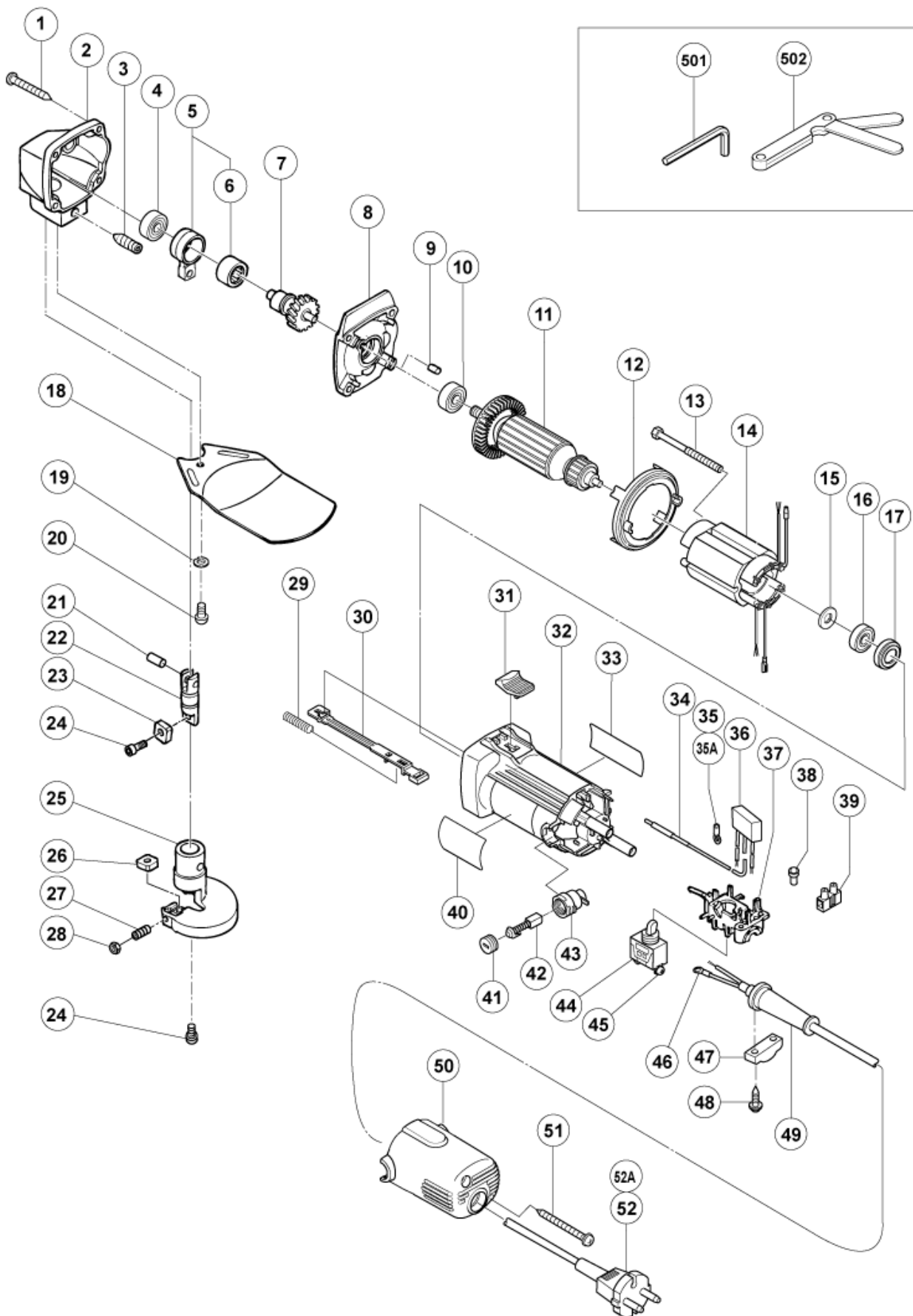


nÂ°	Artikel	Aantal gebruikt
	STANDARD ACCESSORIES	0
	OPTIONAL ACCESSORIES	0
1	957580 TAPPING SCREW D5X30 (OLD 986011)	4
2	998003 GEAR COVER	1
3	998008 HEX.SOCKET SET SCREW M8X20	1
5	998004 CONNECTING ROD ASS'Y	1
6	993163 NEEDLE BEARING (M152112)	1
7	998006 SPINDLE	1
8	998002 INNER COVER	1
9	931701 BEARING LOCK	1
10	608VVM BALL BEARING 608VVC2PS2L	1
11	360622F ARMATURE ASS'Y 240 VOLT	1
11	360622E ARMATURE ASS'Y 220-230 VOLT	1
11	360622C ARMATURE ASS'Y 110 VOLT	1
11	360622U ARMATURE ASS'Y 120V-127V	1
12	306840 FAN GUIDE	1
13	982021 HEX. HD. TAPPING SCREW D4X70	2
14	340567D STATOR 120V-127V	1
14	340567E STATOR ASS'Y 220-230 VOLT	1
14	340567F STATOR ASS'Y 240 VOLT	1
14	340567C @ STATOR ASS'Y 110 VOLT	1
15	942204 WASHER	1
16	626VVM BALL BEARING 626VVMC2ERPS2S	1
17	309929 RUBBER BUSHING	1
18	998010 PROTECTOR	1
19	949454 SPRING WASHER M5 (10 PCS)	1
20	949237 MACHINE SCREW M5X12 (10 PCS)	1
21	993546 PIN D6	1
22	998005 PISTON	1
23	998000 MOVING BLADE	1
24	949812 HEX. SOCKET HD. BOLT M4X10 (10 PCS.)	2
25	998007 BLADE HOLDER	1
26	998001 STATIONARY BLADE	1
27	998009 SLOTTED HD.SET SCREW M4X14	1
28	949565 LOCK NUT M4 (10 PCS)	1
29	314429 SPRING	1
30	314427 SLIDE BAR	1
31	314428 SLIDE KNOB	1

nÂ°	Artikel	Aantal gebruikt
32	314438 HOUSING ASS'Y	1
33	NAME PLATE	1
34	314854 EARTH TERMINAL	1
35	311741 TERMINAL	1
36	994273 NOISE SUPPRESSOR	0
37	314432 SWITCH HOLDER	1
38	959140 CONNECTOR 50091 (10 PCS.)	0
39	938307 PILLAR TERMINAL	0
40	HITACHI LABEL	1
41	936551 BRUSH CAP	2
42	999021 CARBON BRUSH (1 PAIR)	2
43	313777 BRUSH HOLDER	2
44	314603 SWITCH (1P SOLDER TYPE)	1
45	305499 MACHINE SCREW (W/WASHER) M3,5X6	2
46	980063 TERMINAL	1
47	937631 CORD CLIP	1
48	984750 TAPPING SCREW (W/FLANGE) D4X16	2
49	938051 CORD ARMOR D10.1	1
49	953327 CORD ARMOR D8.8	1
50	314433 TAIL COVER	1
51	301815 TAPPING SCREW D4X45 (W/FLANGE)	2
52A	500247Z CORD (NEW 714500)	0
52A	500450Z CORD 230 VOLT GBR	1
52	500439Z CORD FOR AUS (OLD 500226Z/500411Z)	1
52	500201Z CORD 3M 3 X 1,5 H05VV-F (NEW 950543Z)	1
52	500432Z CORD	1
52	500455Z CORD	1
52	500423Z @ CORD 2,5M 2 X 1.0 H05VV-F W/PLUG 13A/250V (OLD 500223Z)	1
52	500470Z CORD	1
52A	500248Z CORD FOR SUI	1
52	500245Z CORD FOR SYR	1
52	500237Z CORD 2,5M 2 X 1.0 W/O PLUG (OLD 500396Z,971517Z,971675Z)	1
501	943277 HEX. BAR WRENCH 3MM	1
502	949128 THICKNESS GAUGE	1
601	302355 PIECE BOLT SET	1



Rev.2

形 名  
CE16SA