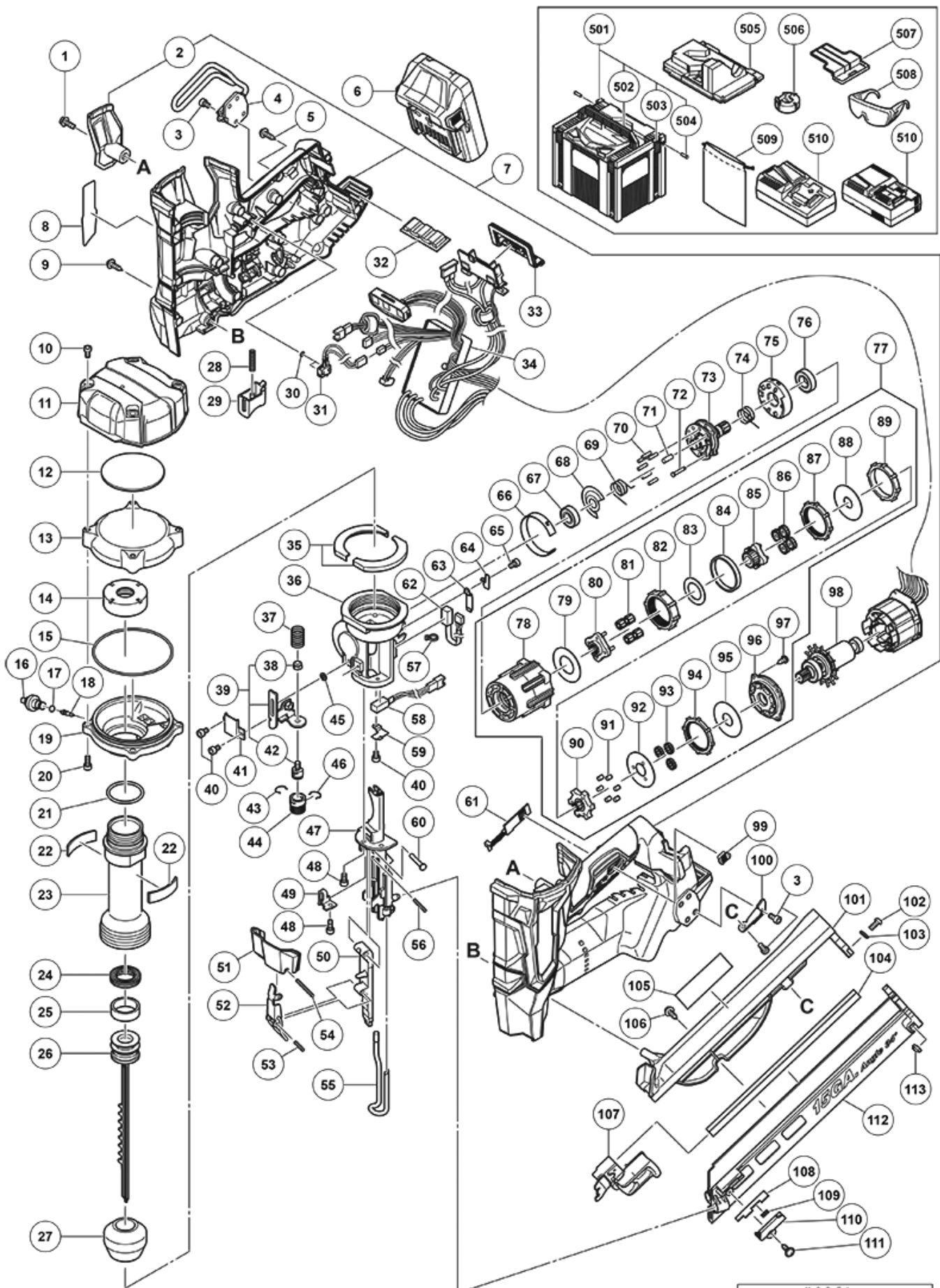


nÂ°	Artikel	Aantal gebruikt
*510	CHARGER (MODEL UC 18YFSL)	1
*510	CHARGER (MODEL UC 18YSL3)	1
*107	371090 NAIL FEEDER (B) NEW	1
*101	371085 MAGAZINE COVER NEW	1
*34	372187 WIRING NEW	1
*6	339783 BATTERY BSL 1830C (EUROPE.AUS.NZL)	2
1	880219 HEX.SOCKET HD. BOLT M5X16 (W/FLANGE) NEW	1
2	371225 HOUSING (C) NEW	1
3	331109 LOW HEAD HEX.SOCKET BOLT M4X8 NEW	7
4	371214 HOOK NEW	1
5	301653 TAPPING SCREW (W/FLANGE) D4X20 (BLACK)	13
7	371009 HOUSING ASS'Y NEW	1
9	994806 SCREW (PLASTIC TIE) D4X20	1
10	371015 HEX.SOCKET BOLT M5 NEW	4
11	371014 TOP COVER NEW	1
12	371012 RUBBER CUSHION (C) NEW	1
13	371035 CHAMBER COVER NEW	1
14	371040 SPECIAL NUT M36 NEW	1
15	371037 O-RING (I.D. 79.5) NEW	1
16	371039 CHARGE CAP NEW	1
17	872822 O-RING (S-5)	1
18	371038 VALVE CORE NEW	1
19	371036 CHAMBER BASE NEW	1
20	949658 HEX.SOCKET HD.BOLT M5X18 (10 PCS)	4
21	371042 O-RING (I.D.32.99) NEW	1
22	371011 RUBBER CUSHION (B) NEW	2
23	371041 CYLINDER NEW	1
24	371046 X-RING NEW	1
25	371047 SLIDE RING NEW	1
26	371045 PISTON NEW	1
27	371048 PISTON BUMPER NEW	1
28	332000 SPRING (T) NEW	1
29	371021 TRIGGER NEW	1
30	371020 O-RING (I.D. 2.5) NEW	2
31	371019 SWITCH CABLE (A) NEW	1
32	332668 RUBBER CUSHION	1
33	370728 TERMINAL RUBBER (A) NEW	1
35	371010 RUBBER CUSHION (A) NEW	2

nÂ°	Artikel	Aantal gebruikt
36	371050 NOSE NEW	1
37	371067 SPRING NEW	1
39	371064 PUSHING LEVER ARM ASS'Y NEW	1
40	325077 SEAL LOCK HEX. SOCKET HD. BOLT M3X6	3
41	371058 PUSHING LEVER ARM HOLDER NEW	1
42	371065 PUSHING LEVER PIECE NEW	1
43	881765 RATCHET SPRING	1
44	887358 ADJUSTER	1
45	371062 WASHER D4 NEW	1
46	886331 RATCHET SPRING	1
47	371057 BLADE GUIDE NEW	1
48	886311 SEAL LOCK HEX. SOCKET HD. BOLT M4X12	3
49	371061 PUSHING LEVER ARM HOLDER (B) NEW	1
50	371070 GUIDE PLATE NEW	1
51	371079 LOCK LEVER COVER NEW	1
52	371076 LOCK LEVER NEW	1
53	949496 ROLL PIN D3X16 (10 PCS) (OLD 949496Z)	1
54	371080 ROLL PIN D3X32 NEW	1
55	371083 PUSHING LEVER NEW	1
56	371077 ROLL PIN D3X22 NEW	1
57	6696839 WIRE BAND NEW AUG	1
58	371022 SENSOR (B) NEW	1
59	371052 SENSOR HOLDER (A) NEW	1
60	371073 GUIDE PIN NEW	1
61	331790 LEVER (C) NEW	1
62	371023 SENSOR (C) NEW	1
63	371054 ROTOR NEW	1
64	371053 SENSOR HOLDER (A) NEW	1
65	325241 SEAL LOCK HEX. SOCKET HD. BOLT M3X8	1
66	371051 SHIELD RING NEW	1
67	371033 BALL BEARING NEW	1
68	371032 WASHER (A) NEW	1
69	371027 WHEEL SPRING (A) NEW	1
70	371030 NEEDLE ROLLER D3 NEW	6
71	371031 NEEDLE ROLLER D4.5 NEW	1
72	371029 PIN (A) NEW	1
73	371026 PIN WHEEL NEW	1
74	371028 WHEEL SPRING (B) NEW	1

nÂ°	Artikel	Aantal gebruikt
75	371034 POSITION DETECTOR NEW	1
76	6901VV BALL BEARING 6901VVCMP2L	1
77	371025 GEAR BOX ASS'Y NEW	1
78	GEAR CASE	1
79	WASHER (E)	1
80	CARRIER	1
81	PLANET GEAR (C) (4 PCS.)	4
82	RING GEAR (C)	1
83	WASHER (D)	1
84	GEAR SPACER	1
85	PINION (C)	1
86	PLANET GEAR (B) (4 PCS.)	4
87	RING GEAR (B)	1
88	WASHER (C)	1
89	LOCK RING	1
90	PINION (B)	1
91	NEEDLE ROLLER (A) (6 PCS.)	6
92	WASHER (B)	1
93	PLANET GEAR (A) (3 PCS.)	3
94	RING GEAR (A)	1
95	WASHER (A)	1
96	MOTOR SPACER	1
97	TAPPING SCREW D3X8	4
98	361054 ROTOR NEW	1
99	326276 LEVER (A)	1
102	885997 MACHINE SCREW M5X15 BLACK	2
103	949431 BOLT WASHER M5 (10 PCS.)	2
104	886591 NAIL RAIL	1
106	307811 TAPPING SCREW D4X16 (W/FLANGE) (BLACK) (OLD 930446)	1
108	371091 PUSHING STOPPER (A) NEW	1
109	886619 PUSHING STOPPER SPRING	1
110	886616 PUSHING STOPPER COVER	1
111	306371 TAPPING SCREW 3X10 (W/FLANGE)	1
112	371226 MAGAZINE NEW	1
113	877371 NYLON NUT M5	1
501	337528 CASE ASS'Y (STACKABLE)	1
502	336473 HANDLE	1
503	336472 LATCH	4

nÂ°	Artikel	Aantal gebruikt
504	336474 HINGE	2
505	371895 BOTTOM CUSHION NT1850/1865DBSL (HSC)	1
506	371094 NOSE CAP NEW	1
507	329897 BATTERY COVER	1
508	875769 SAFETY GLASSES	1
509	6698667 POUCH CLOTH NEW	1



Rev.1

MODEL  
NT1865DBAL